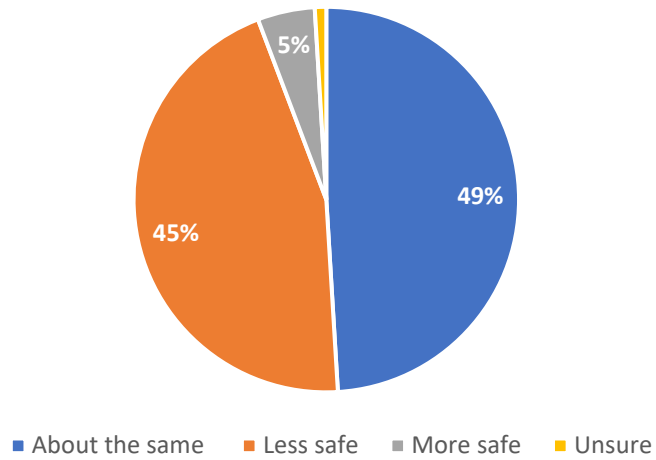
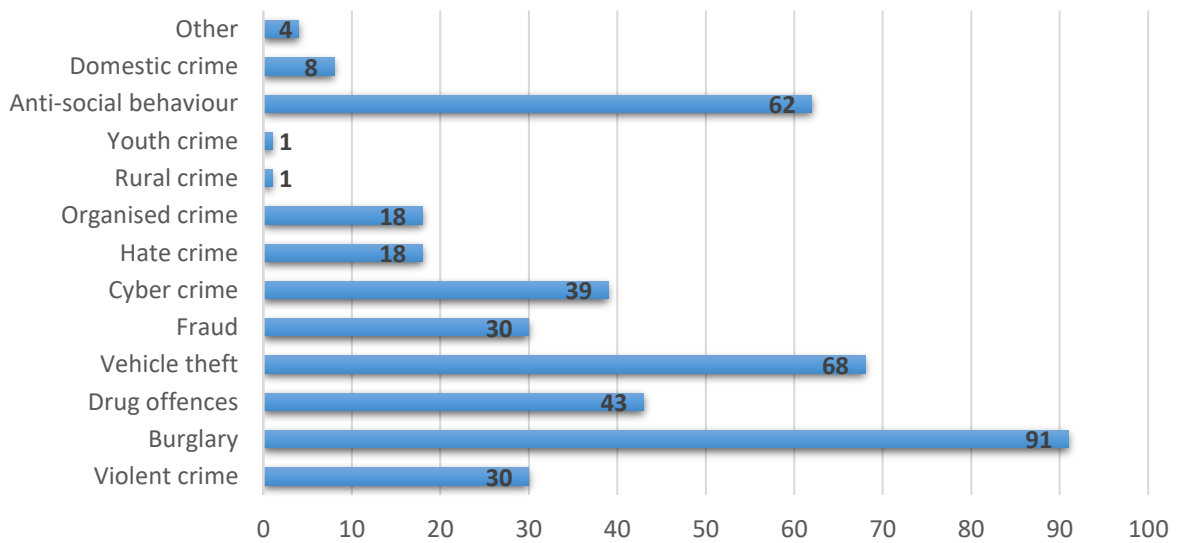


## Crime Survey: Results

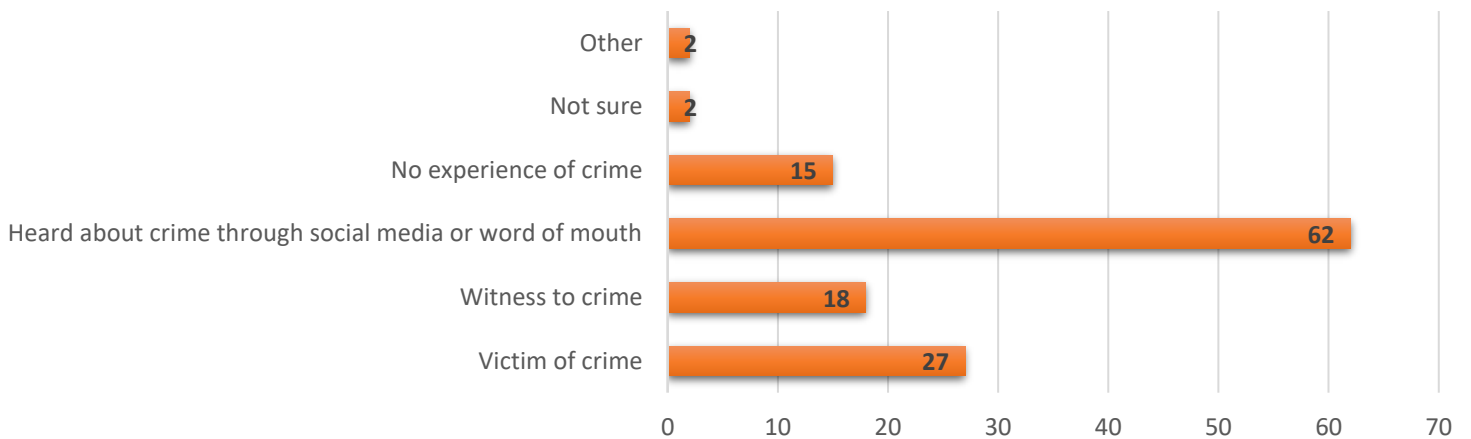
There has been a 50% reduction in overall crime since 2010.  
Thinking about your own household, do you feel more or less safe?



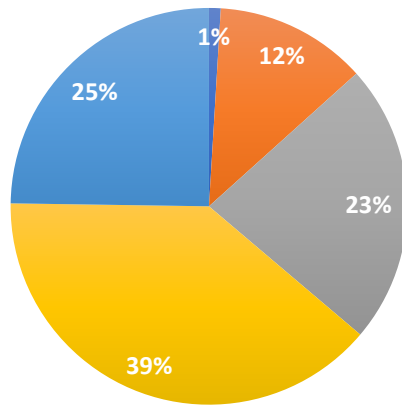
Thinking about how safe you feel in your community, what crimes are you most concerned about locally? Tick all that apply.



What, if any, experience have you had of crime locally?

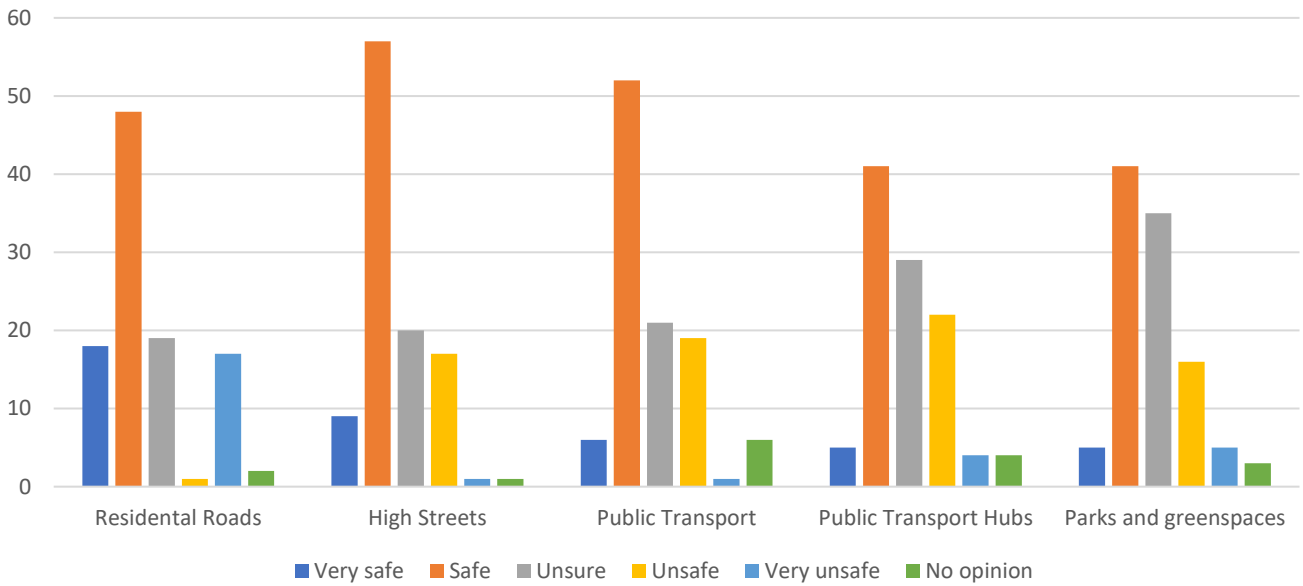


How satisfied are you with the visibility of policing locally?



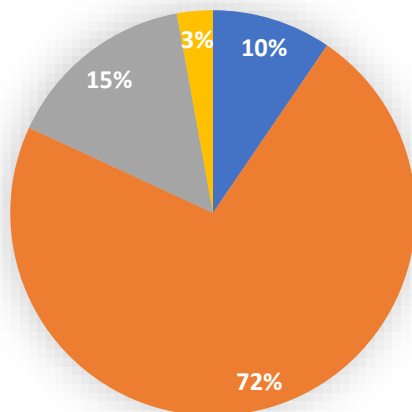
■ Very satisfied ■ Satisfied ■ Unsatisfied ■ Very unsatisfied ■ Unsure

How safe do you feel in or around the following:



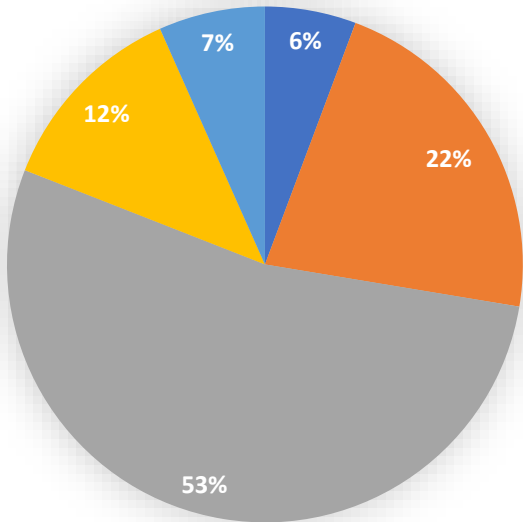
■ Very safe ■ Safe ■ Unsure ■ Unsafe ■ Very unsafe ■ No opinion

Policing in our area is under the control of the Mayor of London. Under his leadership, the Met was the only force in the country not to meet recruitment targets. Do you feel the Mayor gives enough priority to policing in the suburbs?



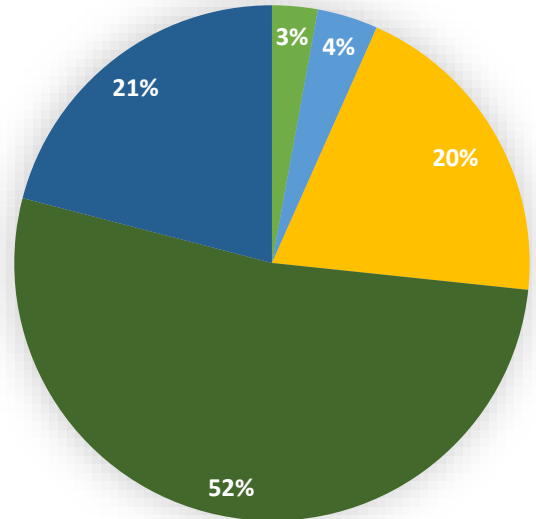
■ Yes ■ No ■ Unsure ■ No opinion

How well do you feel the Mayor understands the effects of crime in Ruislip, Northwood and Pinner?



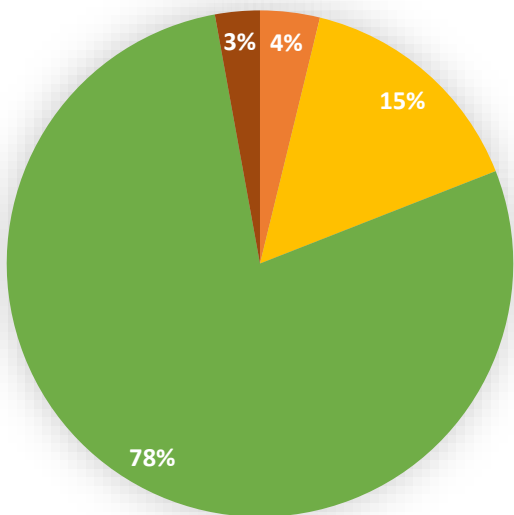
- Understands them very well
- Understands them to an extent
- Does not understand them at all
- Unsure
- No opinion

How satisfied are you with the Mayor's tackling of knife crime?



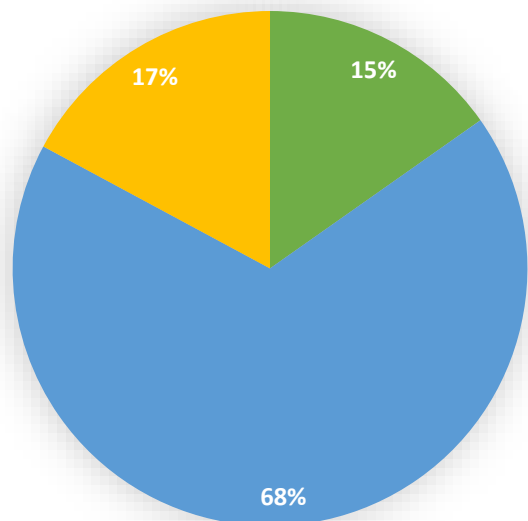
- Very satisfied
- Satisfied
- Unsatisfied
- Very unsatisfied
- Unsure/no opinion

The Mayor of London has plans for further police station closures across London. How supportive are you of this?



- Unsure
- Somewhat unsupportive
- Very unsupportive
- No opinion

Lastly, do you think the Mayor's focus on cameras and Fixed Penalty Notices is a better way of ensuring road safety than more regular police traffic patrols?



- Cameras and Fixed Penalty Notices
- More traffic patrols
- Unsure/no opinion